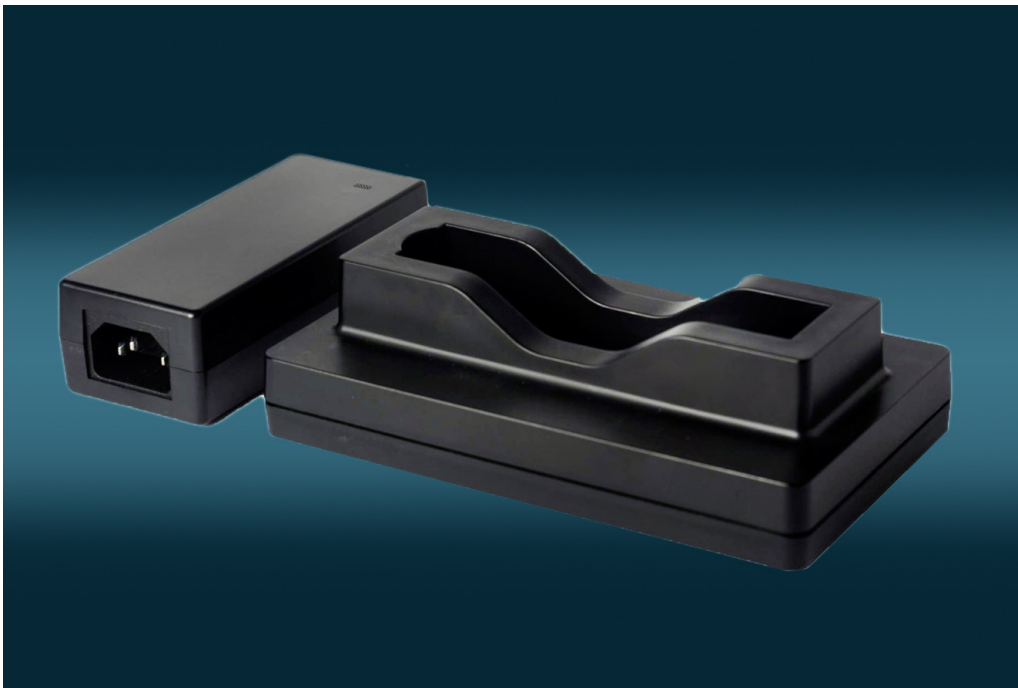


SMBUS Universal Battery Charger D90481

65 Watt SMBUS Desktop Universal Battery Charger for Smart Batteries



Features:

- Single bay fast charger
- For use with standard, smart D92040, D92057, D92054, D92040-2, D92020, D92024 series battery packs
- Optimized charging process for dedicated Cell-Con batteries: longer cycle life / faster charging
- Simple operation – Plug and Play
- Automatic recognition and calibration of smart battery learned capacity
- External power supply for worldwide use
- Country specific AC input cables available



Applications:

Suitable for use with tablet PC's, notebooks, industrial and medical devices, etc.

Input	
Voltage range	18 - 24VDC
Power	65W
Current	3300mA max.

General	
Efficiency**	~95% at 100% load
Indicator	Multi-color LED (green, red, orange)
Battery types	Standard battery form factors D92040, D92057, D92054, D92040, D92020, D92040-2
Green procurement	RoHS2011/65/EU WEEE 2012/19/EU, Chinese RoHS

Charger Mechanical Details	
Dimensions (LxWxH)	151 x 90 x 43mm
Weight	198g (excluding power supply)

Output	
Voltage range	0 - 17.4VDC
Current range	0 - 4.8A
Voltage tolerance*	+/- 1% maximum
Current tolerance*	+/- 10% maximum
Protection	Short circuit Over temperature shutdown Input / output over current

Environmental	
Cooling	Convection cooled
Temperature	Operating: 0°C to 40°C Non-operating -10°C to 70°C
Pressure & Altitude	Operating: 1060hPa to 795hPa -382m to 2000m Non-operating: 1060hPa to 572hPa, -382m to 4570m
Humidity	5% to 95% r.H., non-condensing

Notes: *Total regulation tolerance includes initial set accuracy, line and load regulation
 **Power losses of input and output cables are not considered here.



SMBUS Universal Battery Charger D90481

LED Indications	
One time Red/Orange/Green	Self test: Charger is ready for use.
Red/Green blinking	Battery recognition and initialization.
Orange blinking	The battery is currently being calibrated.
Orange light	The inserted battery is of the correct type and is currently being charged.
Green light	The battery is charged and can be removed for use.
Red blinking	The battery is too hot or too cold to be charged without damage. If the battery is too cold it will be charged as soon as it has warmed up sufficiently. If the battery is too hot it should be removed to cool down.
Red light	The battery is damaged or it is a conventional battery which cannot be recharged.

Safety & EMC	In combination with specified external AC/DC power supply	
Regulatory approvals	Europe	CE
Electromagnetic Emissions	Europe USA	EN55011, EN55022, level B FCC15 class B CISPR 22, level B
Electromagnetic Immunity	ESD immunity Electromagnetic field immunity EFT / Burst Surge Conducted Immunity Magnetic Fields Voltage dips, short instrumentations & Voltage variations Immunity characteristics	EN/IEC61000-4-2 EN/IEC61000-4-3 EN/IEC61000-4-4 EN/IEC61000-4-5 EN/IEC61000-4-6 EN/IEC61000-4-8 EN/IEC61000-4-11 EN55024

Specification external AC / DC power supply

Input		General	
Voltage range	100-240 VAC	Efficiency	CEC Level V
Current	1.5A maximum	Line regulation	+/- 1%
Stand by power	No load < 0.5W @ 230 VAC	Ripple & Noise	240mV (p-p)
Output		Power Supply Details	
Voltage range	24VDC	Standard output connector	DC barrel plug
Power	65W maximum	Housing dimensions (LxWxH)	112 x 47 x 33mm
Current range	27A	Weight	225g
Protection	Over voltage, Short circuit	Environmental	
		Operating Temperature: 0°C to 40°C	Non-Operating Temperature: -10°C to 70°C

Safety & EMC Approvals			
Region	Approvals	Region	Approvals
USA / Canada	cULus	Europe	CE
International	CB	Australia	RCM
Russia (Customs Union)	EAC	Korea	KC
China	CCC	Japan	PSE

