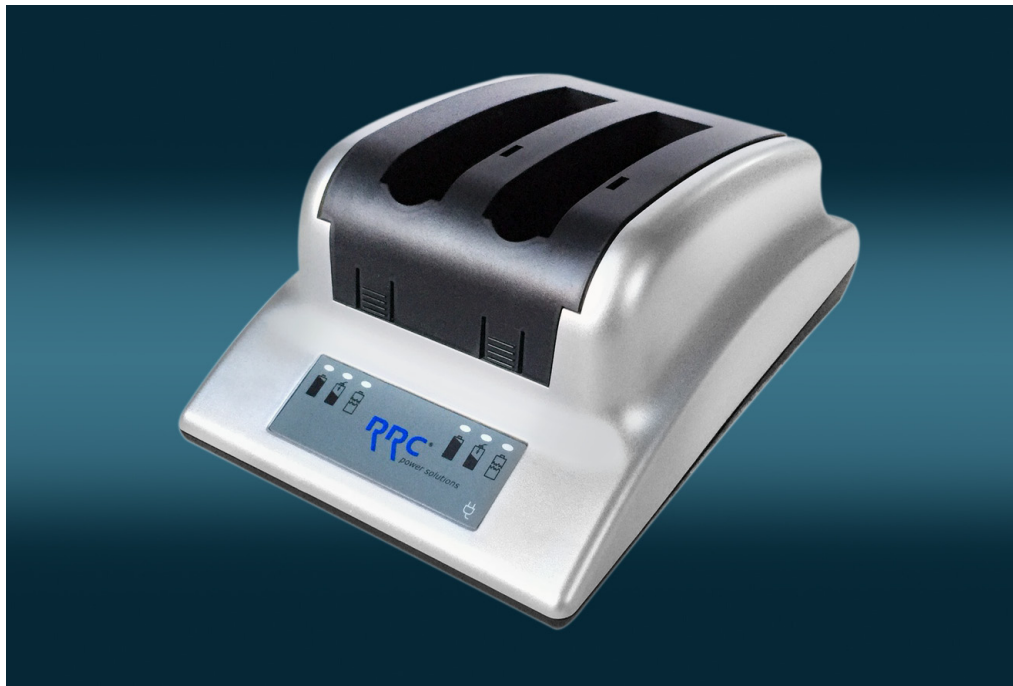


## 2 Bay Desktop Battery Charger D90512

65 Watt SMBUS Desktop Universal Battery Charger for Smart Batteries



### Features:

- 32W maximum charging power per bay
- A base charger and a customizable battery adapter module
- Two bay charger for smart batteries
- Suitable for cell chemistries NiCd, NiMH Li-ion, LiPoly
- International approvals for safety and EMI
- Monitoring of cell-voltage, cell temperature and charge time
- Wide input voltage range for worldwide use
- Country specific AC input cables

### Applications:

Suitable for use with notebook and other IT batteries as well as Cell-Con stock smart batteries



Input	
Voltage	24VDC
Power	65W max.
Current range	0 - 2.5A nominal

General	
Efficiency**	~80% at 100% load
MTBF	> 20000h at 25°C and full load per MIL-HDBK 217F
Indicator	Multi-color LED (green, red, orange)
Battery types	Standard battery form factors D92040, D92057, D92040-2, D92054, D92024, D92020
Green procurement	RoHS, WEEE, Chinese RoHS

Charger Mechanical Details	
Dimensions (LxWxH)	155 x 225 x 95mm
Weight	610g (excluding power supply)

Output	
Voltage range	0 - 16.8VDC
Current range	0 - 3.3A
Voltage tolerance*	+/- 1% maximum
Current tolerance*	+/- 10% max.
Protection	Short circuit Over temperature shutdown

Environmental	
Cooling	Convection cooled
Temperature	Operating: 5°C to 35°C Non-operating -10°C to 60°C
Pressure & Altitude	Operating: 1060hPa to 795hPa -382m to 2000m Non-operating: 1060hPa to 572hPa -382m to 4570m
Humidity	5% to 95% r.H., non-condensing

Notes: \*Total regulation tolerance includes initial set accuracy, line and load regulation

\*\*Power losses of input and output cables are not considered here.



## 2 Bay Battery Charger D90512

LED Indications	
Red, Green, Orange off	Battery not installed or improperly installed
Orange light	Charging in process (rapid or trickle)
Green light	The battery is charged and can be removed for use.
Red blinking	Standby mode (due to abnormal temperature)
Red light	Abnormal charge mode (due to defective battery)

Safety & EMC		
Regulatory approvals	Europe USA, Canada International	CE cULus UL60950-1 CB Report IEC60950-1
Electromagnetic Emissions	Europe USA	EN55024, EN55022, level B FCC15 class B
Electromagnetic Immunity	ESD immunity Electromagnetic field immunity EFT / Burst Surge Conducted Immunity Magnetic Fields	EN/IEC61000-4-2, 4/8kV, perf. criteria B EN/IEC61000-4-3, 3V/m, perf. criteria A EN/IEC61000-4-4, 1kV, perf. criteria B EN/IEC61000-4-5, 1kV, perf. criteria B EN/IEC61000-4-6, 3V, perf. criteria A EN/IEC61000-4-8, 3A/m, perf. criteria A

